

# BR 13x-2

## Self-supporting floor, insulated

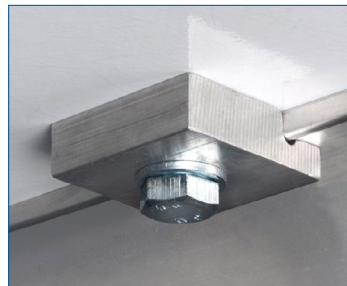


for normal chassis-heights

- > insulating
- > weight-optimised
- > **floor construction:**
  - 6 mm phenolic resin panel
  - 50 mm insulating foam
  - 1.5 mm GRP top layer
- > *optionally* GRP-AntiSlip or aluminium barley grain sheet
- > for low frames chassis



with aluminium longitudinal beams (*not required for low frames chassis*)



connecting soil using clamping clamps



insulated floor (*sectional view*)



fastening of the longitudinal beams on the chassis



**AluTeam Fahrzeugtechnik GmbH**  
Brockhagener Straße 88, D-33649 Bielefeld  
Tel. + 49 (0)521 - 41 73 11 - 0; Fax - 90  
E-Mail: info@aluteam.de / [www.aluteam.de](http://www.aluteam.de)

**AluTeam Fahrzeugtechnik Wolfhagen GmbH**  
Hans-Böckler-Straße 4, D-34466 Wolfhagen  
Tel. + 49 (0)56 92 - 609 - 0; Fax - 38  
E-Mail: wolfhagen@aluteam.de / [www.aluteam.de](http://www.aluteam.de)

03.21