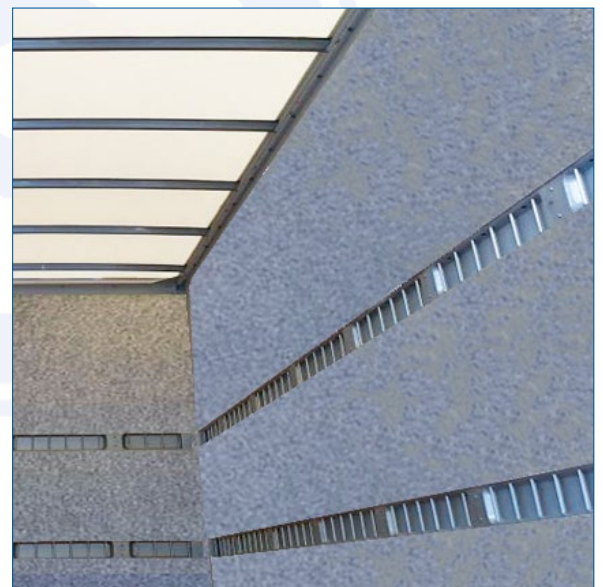


# BR 137-x

## Inner Lining



- > plywood 6 mm  
*(can be combined with needle felt)*
- > prefabricated
- > batten by batten
- > upholstery trims
- > lashing rails flush depending on version



**AluTeam Fahrzeugtechnik GmbH**  
Brockhagener Straße 88, D-33649 Bielefeld  
Tel. + 49 (0)521 - 41 73 11 - 0; Fax - 90  
E-Mail: [info@aluteam.de](mailto:info@aluteam.de) / [www.aluteam.de](http://www.aluteam.de)

**AluTeam Fahrzeugtechnik Wolfhagen GmbH**  
Hans-Böckler-Straße 4, D-34466 Wolfhagen  
Tel. + 49 (0)56 92 - 609 - 0; Fax - 38  
E-Mail: [wolfhagen@aluteam.de](mailto:wolfhagen@aluteam.de) / [www.aluteam.de](http://www.aluteam.de)

03.21