

# Trade fair News

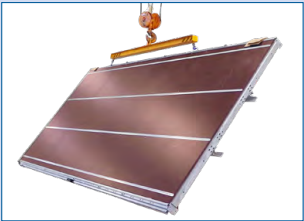


The quick information for our customers

## AluTeam and Schneider at the IAA 2022: ... on the move

From 20 - 25. 09. 2022 you will find practical solutions at the leading trade fair for vehicle construction in Hanover. We look forward to talking to you in Hall 27, C16

### New Curtainsider Kits 180-2



The new kits are particularly advanced. It starts with the **fully mounted floor assembly** with tie brackets in the outer frame and optional airline tracks in the floor.



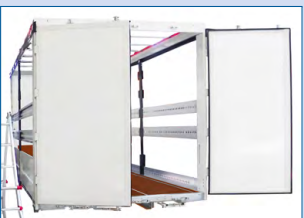
Components such as door stops or an access ladder are already fitted as an option.



A special highlight is the **fully assembled sliding roof**, if desired already with attached roof tarp.



The **safety insertion slats** with snap-in tracks can be used for locking or double deck beams such as lashing straps.



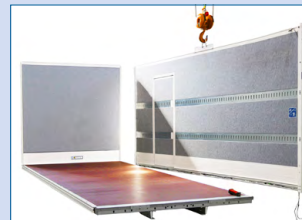
The kit is also available with a fixed tarpaulin roof and drop sides.

The **front wall** and the **rear stanchions** are available in all common RAL colours.

**You build the kit in only 6 man hours!**



### With the box kits of the 3rd generation ...



... increase your efficiency through short assembly times. After the BR 13x-3, we developed the **new 14x-3 kits** for bodies from 6.5 to 15 tonnes.



Instead of assembling many individual parts to form the sub-structure and floor, **you receive a complete floor assembly** according to your requirements, including strong tie brackets in the outer frame.



**Options** such as door stops or an access ladder are already fitted on request.



If required, **airline tracks** are already mounted in the floor (e.g. GRP anti-slip surface) and the walls.

**FerroFoam® walls and doors** are optionally available in popular RAL colours. The interior and exterior lighting is already installed.

## You can also mount equipment cases ...

... in a very short time as a prepared blank on a vehicle. You will find a corresponding example on the stand.



You can also receive **pre-assembled blanks** on request, for example for freezer cases or shelters for applications in the fire brigade, police, forestry, broadcasting technology etc. **Our factory in Wolfhagen has decades of experience in this field.** In this way, you can also efficiently handle larger orders that exceed your current production capacity.

## Also for insulated kits for temperature-controlled transports ...

... we support you in order to gain **more space for pallets**, for example. Conventional base skirting boards restrict the clear loading width for insulated bodies.



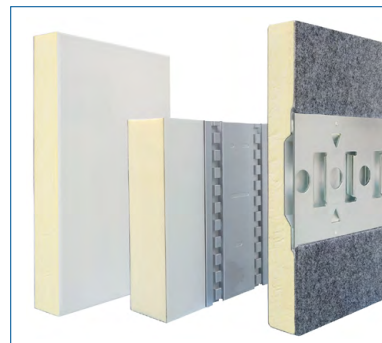
With the flush-mounted scuff rails of the FerroFoam® kits, you gain at least 12 mm interior width, with a longitudinal partition even 24 mm.

Multi-temperature bodies benefit particularly from this development with regard to the handling of the load carriers.

## Innovative panels

Your customers need **more payload**? Our solution includes a GRP outer deck layer and a robust aluminium inner deck layer. The panels weigh only 5.5 kg/m<sup>2</sup>, making them a good choice for van-class bodies.

But of course you can also realise completely different projects with the panels foamed in the Wolfhagen factory. You will find examples from **the innovative panel programme with thicknesses from 25 to 150 mm.**



We offer panels **with load securing as well as double deck rails, cut-outs** for doors, flaps, ceiling evaporators etc. **with foamed-in empty tubes, beading, reinforcements** as well as complete **doors and flaps.**

## With interlocks by Schneider ...

... for BDF and ISO containers, BDF spars and kits for complete swap systems, you can benefit from the booming parcel market.



You will also see different solutions for this in Hanover. With the sophisticated modular system, you can take into account the individual needs of your customers, for example with regard to different parking heights and wheelbases.

In addition, your production is time-saving and cheaper than the so-called factory systems. At the same time, you minimise the downtimes of the carrier vehicles.



AluTeam Fahrzeugtechnik GmbH  
Brockhagener Straße 88, D-33649 Bielefeld  
Tel. + 49 (0)521 - 41 73 11 - 0; Fax - 90  
E-Mail: [info@aluteam.de](mailto:info@aluteam.de) / [www.aluteam.de](http://www.aluteam.de)

AluTeam Fahrzeugtechnik Wolfhagen GmbH  
Hans-Böckler-Straße 4, D-34466 Wolfhagen  
Tel. + 49 (0)56 92 - 609 - 0; Fax - 39  
E-Mail: [wolfhagen@aluteam.de](mailto:wolfhagen@aluteam.de) / [www.aluteam.de](http://www.aluteam.de)

Schneider Fahrzeug- und Containertechnik GmbH  
Brockhagener Straße 92, D-33649 Bielefeld  
Tel. + 49 (0)521 - 41 73 12 - 0; Fax - 90  
E-Mail: [info@schneider-fc.de](mailto:info@schneider-fc.de) / [www.schneider-fc.de](http://www.schneider-fc.de)