

Grip buckets and grippers



Read through the instruction completely before operational start-up and keep them carefully for later use!

Table of Contents

	Page
1. Introduction, safety and warning notes	1
1.1 Introduction	1
1.2 Utilisation according to specification	1
1.3 General notes on safety	1
1.4 Guarantee / Copyright	2
2. Preparation for use	2
2.1 Technical prerequisites on the loader	2
2.2 Bolting the perforated plate receptacle	2
2.3 Operational start-up	2
3. Operation of grip buckets and grippers	3
3.1 The devices used	3
3.2 After the transport operation	3
3.3 Driving in road traffic	3
4. Maintenance, repairs and guarantee	4
4.1 Care and maintenance	4
4.2 Repairs, conversions and technical advice	4
5. Waste disposal of devices after service life	5
6. Technical data	5
7. Declaration of conformity	6

1. Introduction, safety and warning notes

1.1 Introduction

Many thanks for your decision in favour of a high-quality attachment of Schneider Fahrzeug- und Containertechnik GmbH (here after referred to in abbreviated form as Schneider). This instruction explain the operation of:

- Silage buckets, product code 125.040 ...
- Multi-grip buckets, product code 125.060 ...
- Multi-grip buckets compact, product code 125.061 ...
- Dung and silage grippers, product code 125.033 ...



Schneider continuously works at improving products and therefore reserves the right to carry out changes and improvements as necessary.

In case of any questions, please contact your dealer immediately.

1.2 Utilisation according to specification

The silage buckets and multi-grip buckets, as well as dung and silage grippers from Schneider, are used for the lifting, transporting and setting down of hay, straw, silage, shrub-cuttings or stable dung. Every use deviating from this is considered as not in agreement with the intended purpose.

Only those persons may employ and maintain the devices who have read and understood this instruction, and who are informed about the hazards in their handling. In case of transfer of the devices to other persons, it is absolutely necessary to hand over this instruction and, as appropriate, indicate special features, such as e.g. conversions.



If you act contrary to the specifications, notes and warnings given here, this is not utilisation according to specification. Hazards arise as a result. **The owner or user of the attachments, and not the manufacturer, have sole liable for any resulting damage and accidents. Furthermore, the guarantee is voided.**

1.3 General notes on safety

Pay attention to your own safety and that of your employees. **Comply absolutely with the accident-prevention and occupational medical specifications, as well as road traffic legal stipulations, in case of all work with the devices,** because the work with attachments includes hazards such as:



- Falling-down load



- Dangers of injury



- Falling over / danger of toppling

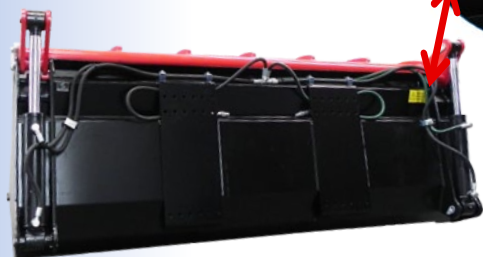


- Danger of crushing

We identified some important hazards through these warning symbols. However, caution is generally required with all work, in particular you should:

- .. read this instruction before operational start-up of the devices
- .. always keeping a sufficient safety distance away from the device
- .. not exceed the nominal load-bearing capacity of the devices - as indicated in the technical data on *Page 6* - under any circumstances
- .. operate the devices exclusively from the cab of the lifting device (cab of the traction engine or loader)
- .. guarantee that you can oversee your work well and have good visibility conditions e.g. a clean windshield.

Attention: The rating plate and the notes on safety (stick-on labels) are located above to the right on the device rear side. Ensure the stick-on labels are not lost. They must remain visible for all users and be considered by them.



Hazard: Persons may never be present in the danger zone of the lifted device or in the opened or closing bucket or gripper. Under no circumstances may you lift and/or transport persons, animals or objects with the device, not corresponding to the intended purpose (cf. 1.2)!

1.4 Guarantee / Copyright

Our general supply and performance conditions and/or those of your dealer apply. You can find our Gen. Terms & Conditions in the Internet under: www.schneider-fc.com. Liability and guarantee claims are to be initially addressed to your dealer.

The copyright to this instruction is with Schneider. They are determined only for the users of the corresponding Schneider attachment devices and may not be:

- duplicated
- distributed or
- be communicated in any other way either in total or in part.

Contraventions can result in civil and criminal legal proceedings!

2. Preparation for use

2.1 Technical requirements on the loader

Attention: Your **tractor, wheeled loader, telescopic loader or yard loader must be** sufficiently large and heavy. Its load-bearing capacity must be above the total weight of the device and the transportation goods, as well as **corresponding to the Machinery Directive 2006/42 /EG**. A **pressure retention valve** should be integrated into the control line of the hydraulic cylinder in order to prevent any unintentional opening of the grippers.



Hazard: The maximum **operating pressure** of the hydraulic cylinder is **180 bar**. Check the pressure of the hydraulics of the loader. If it is too high, you require a pressure relief valve. **Make sure that the hydraulic lines and valves on the loader have not become worn, aged or leaky.**

Our hydraulic attachment devices employ the quick-coupling connector BG3 as a hydraulic connection.

2.2 Bolting the perforated plate receptacle

You are provided with our silage buckets, multi-grip buckets, as well as dung and silage grippers, with 2 perforated plate (LP) receptacles suitable for your loader. We equip a lot of our grippers and buckets in this way, which then fit different loaders. Furthermore, you can further employ the devices in case of vehicle change through the replacement of the perforated plates.



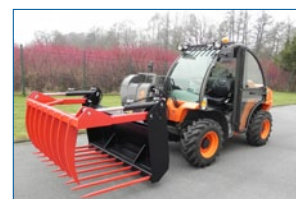
- Connect each perforated plate with the attachment using 6 of the delivered M 16 x 45 bolts in each case.
- Insert the bolts into the corresponding bore on the support plate of the device, each with an underlay washer under the screw head, through the bore into the perforated plate, so it is as tight as possible to the right and to the left near the receptacle. Likewise place on the opposite side an underlay washer with the stop nut M 16 on the bolt. Check the separation distance on the loader.
- Tighten the bolts with a tightening torque of 200 Nm.


2.3 Operational start-up



Hazard: When starting up the device even small inattentions can cause serious injuries, in particular crushing. Never work with bare hands. It is absolutely necessary to wear gloves as well as safety shoes. Keep a sufficient safety distance to persons, animals and objects.

- Bring the hydraulic control units into zero position on the tractor or yard or telescopic loader. Note here that the tire filling pressure of the wheel corresponds to the load in case of loading.
- Place the attachment device onto a solid, stable, flat ground surface. Check all nuts and bolts for secure seating.
- With the **attachment device on the front loader**, grip with the unlocked and quick-change frames tilted forward under the hook of the device. Tilt the quick-change frame backwards and then interlock it.
- In case of the **telescopic, yard or wheel loader**, proceed analogously. Consider the specifications of your loader in accordance with its **operating instruction**.



- Close the hydraulic hoses of the device on the connections of the loader (3rd control circuit). Note that couplings are clean so that no dirt gets into the hydraulic system
-  Ensure that the hydraulic hoses can move freely and that no hydraulic oil discharges. In particular when tilting, avoid any "squeezing" of the hoses. Check the attachment devices for proper function, where you operate the hydraulic function.
- Make sure that the operating lever for the cylinder(s) of the device cannot be confused with other operating levers, in order to avoid any unintentional operation.

Your Schneider attachment device is now ready for action!

3. Operation of grip buckets and grippers

3.1 The devices used



Hazard: While using the device, always keep a sufficient safety distance to persons, animals and objects!

- Drive slowly to the transportation goods with open bucket or gripper (see 1.2). It should be distributed uniformly.



- Ensure the grippers/buckets do not catch onto any foreign bodies.
- Always slide loaded goods downhill and load them at the bottom. Never drive with loader lifted perpendicular to the inclination. Generally you should keep to a top speed of approx. 10 km/h in case of loading work, due to the high tire and axle loading.
- For favourable driving characteristics of the transportation vehicle, drive the transportation goods in the most lowered position possible.

- **Attention:** The hydraulic cylinder generally keeps the grippers reliably closed. However, it does not offer any protection against the loss of loaded goods. With lifting and transporting, the utmost caution is therefore always needed



3.2 After the transport operation



Hazard: Unexpected movements of the combination of vehicle and shovel / gripper endanger persons, animals or objects. This also applies for lowered attachment devices which are not seated securely - **tilt danger**.



Hazard: Park the support vehicle only when the bucket or gripper is in the lower position.



- If you do not employ the support vehicle along with the device, then ensure that the combination does not implement any unexpected movements. Also ensure that the device cannot be moved unintentionally.
- In order to protect non-participating persons, such as e.g. children playing, shut down the engine of the transportation vehicle and pull out the ignition key. As appropriate, decouple the hydraulic hoses.
- Set the bucket or gripper on the placement feet, with completely lowered and closed gripping arms, on a solid and maximum level ground surface.
- If you are not using the device, park it as described on a suitable ground surface and disconnect the hydraulics from the loader and device.
- Decouple the bucket / gripper from the vehicle, where you tilt the quick-change frames back and unlock. After that, tilt the exchange frame forward and then remove the vehicle.

3.3 Driving in road traffic

Schneider attachment devices are utilised in agricultural operations, therefore in the yard or in the field. During transport to the place of work, special caution is necessary.



Hazard: If agricultural machinery is moved on public roads, it must correspond to the specifications of the road traffic certification ordinance (StVZO).

- You can transport the devices with a trailer.
- Provided that the road traffic regulations valid in your country make this possible, you can drive the tractor, wheel, telescopic or yard loader, together with the bucket/gripper, to the place of work. It is imperative to follow the operating instructions of the loader!
- In case of a front loader, raise it up. Your field of vision must remain as free as possible. The horizontal separation distance between the front loader end and the steering wheel middle may be max. 3.5 m. The front edges of the device must be at least 2 m above the road. As appropriate, it is to be removed. Lock the operating or blocking-lever for driving downhill.
- In case of a wheel, yard or telescopic loader, proceed analogously.
- **Transportation goods (see 1.2) may not be transported on public roads and paths with the devices.**

4. Maintenance, repairs and guarantee

4.1 Care and maintenance



Hazard: With the care and maintenance of the device, inattention can cause serious injuries, in particular crushing. Never work with bare hands. It is absolutely necessary to wear gloves as well as safety shoes. Note the presence of persons who are endangered through unexpected movements of the coupled gripper/shovel falling over.

- For the care and maintenance, park the device as described, secure against tilting, on a suitable ground surface and disconnect the hydraulics from the loader and device.
- No hydraulic oil may drip from the lines. Collect the oil with a suitable container and wipe the line openings with a clean cloth. Avoid skin contact with hydraulic fluids. - **Consider the notes on safety of the manufacturer of the hydraulic oil (no oil should enter the soil!).**
- Then, as described under 3.2, decouple the device from the support vehicle.
- **After the first 10 operating hours, lubricate** all lubrication points and tighten all nuts and bolts. So that the grease reaches all positions, always lubricate the gripper /bucket in the closed and open position.
- **Every further 50 operating hours, lubricate** the lubrication points of the gripper or bucket with the lubricating grease: LT-43 temperature range from -20°C to 130°C, provide cold-water resistant. Check all movable parts for wear and exchange these as necessary. Replace damaged parts immediately and completely. Check the seating of all nuts and bolts.

Tip: Provide the bolts with de the bolts with a bolt-securing agent after the tightening.



- Due to pressure pulses, wear, ageing, damage, defective connection etc. **hydraulic hoses** represent a special hazard. Therefore operators of machines must check the hose lines prior to first use and **after that at regular intervals**, and exchange them in the case of a fault and due to ageing. The hydraulic hoses / lines are to be changed after two years at the latest.

- Work on the hydraulics are to be implemented exclusively by expert persons or workshops (see 4.2).
- You can clean the device with a high-pressure cleaner. Do not direct the jet towards the lubricating nipples or hydraulic connections, as well as towards possible electric lines or electrical / electronic component parts.

Tip: If you do not require the attachment devices over a longer time, clean them and spray the exposed parts lightly with a biological oil. Store the devices as far as possible dust-free.

4.2 Repairs, conversions and technical advice

Repairs and conversions are to be carried out only by experienced, specialist persons, as far as possible with completed training as an agricultural machinery mechanic or comparable qualification.



Hazard: With the repair, the hazard exists that the gripper or bucket can fall over, as described under 3.1 and 4.1. Furthermore, injuries can result through sharp edges or crushing. Work on the hydraulics is dangerous under certain circumstances.

- Always wear the necessary protective clothing and always wear aer protection when working with compressed-air screwdrivers, as well as with an angle grinder or grinding equipment. **It is absolutely necessary to consider the accident-prevention specifications!**
- Secure the device against falling over.
- Before the beginning of hydraulic work, disconnect the hydraulics of the device from those of the support vehicle. Replace damaged hydraulic hoses immediately in order to preclude a hose break and any accidents arising from this.
- Never attempt to search for a leak in the hydraulic hoses with connected support vehicle and seal manually. Liquid under high pressure can easily penetrate clothing, as well as the skin, and cause serious injuries.
- For the lubrication, employ lubricating grease as described under 4.1.
- Never insert bolts diagonally and always **tighten them with the following torques.**

Hexagon bolts	M 6:	10 Nm
	M 8:	30 Nm
	M10:	50 Nm
	M12:	80 Nm
	M16:	200 Nm

The adjustments on the screwdriver are to be checked using corresponding measuring equipment. The torques apply nut-sided in case of dry screw thread.

Attention: Any undershooting of the tightening torques impairs the strength of the device. Any significant overshooting can lead to damage to component parts!

- Employ new original spare parts exclusively in case of repairs. Used component parts or bolts or coming from external sources endanger operating security and therefore result in the voiding of the guarantee.
- In case of every spare parts order or technical inquiry, please inform your dealer of the specs. on the rating plate. The replacement part number can be found here:

Pos.	Spare part	Prod.-code
1	Hydraulic cylinder for multi-grip bucket compact	125.061.600
2	Hydraulic cylinder for multi-grip bucket	125.060.600
3	Hydraulic cylinder for silage bucket	125.026.600
4	Hydraulic cylinder dung and silage grippers	125.036. ...



- The receptacles on the silage buckets, multi-grip buckets, as well as dung and silage grippers, are usually pre-assembled using our innovative perforated plate system. All usual receptacles are therefore generally compatible with the gripper / shovel.
- Implement **other conversions or changes** to your device or its accessories (changes of the mechanical, electrical and hydraulic characteristics) **only with written consent from Schneider**. Otherwise the device becomes a hazard for you and other persons. The guarantee is also voided. Schneider does not assume any liability for damages or injuries.
- In case of retrofitting parts or changes to Schneider component parts, note the corrosion protection, and in particular exclude contact corrosion through different materials.
- For the case that you wish to apply a paint coat, make sure of a secure adhesion of the finish paint with your paint supplier concerning the primer and all other conditions. Consider its safety regulations.

5. Waste disposal of devices after service life



Hazard: For the implementation of the waste disposal, the hazards and precautions apply as were, described under „4.2 repairs and conversions“.

- Empty the hydraulic fluid. Dispose of this according to the instruction of the manufacturer of the hydraulic oil.
- Deliver the hydraulic hoses to a qualified recyclable material centre or a corresponding collection centre.
- All remaining component parts can be brought to a scrap dealer for recycling.

6. Technical data

Multi-grip bucket compact	125.061.012-020
Volume:	440 - 530 L
Weight:	220 - 300kg
Height:	720 mm
Maximum working pressure:	180 bar
Working width:	1.200 - 2.000 mm
Prong number:	6 - 8
Working depth:	850 mm

Multi-grip bucket	125.060.020-025
Volume	1300 - 1700 L
Weight:	700 - 850 kg
Height:	1.060 mm
Maximum working pressure:	180 bar
Working width:	2.000 - 2.500 mm
Prong number:	6 - 7
Working depth:	1.220 mm

Silage bucket	125.040.016-025
Volume:	750-1050
Weight:	700-850kg
Height:	1050mm
Maximum working pressure:	180bar
Working width:	1600-2500mm
Prong number	4-7
Working depth:	1090mm

Dung and silage gripper	125.033.014-022
Weight:	310- 410 kg
Height:	980 mm
Maximum working pressure:	180 bar
Working width:	1.400 - 2.200 mm
Prong number:	8 - 12
Bottom prong length:	910 mm
Working depth:	1.090 mm

7. Declaration of conformity

EG-MASCHINENÜBEREINSTIMMUNGSERKLÄRUNG
EC-DECLARATION OF CONFORMITY FOR MACHINERY
DÉCLARATION DE CONFORMITÉ "CE" POUR MACHINES



Fabrikant/Manufacturer/Fabricant:

**Schneider Fahrzeug-
und Containertechnik GmbH**

Adresse /Address/Adresse:

**Brockhagener Straße 92
D-33649 Bielefeld**

Erklärt hiermit, dass
Herwith declares that
Déclare ci-après que

Seriennummer	125.061.012; 125.061.014; 125.061.016;
Serial number	125.061.018; 125.061.020;
Numéro de série:	125.060.020; 125.060.023; 125.060.025;
	125.040.016; 125.040.018; 125.040.020;
	125.040.022; 125.040.025;
	125.033.014; 125.033.016; 125.033.018;
	125.033.020; 125.033.022

Ausführung/Model/Modèle: Multi-grip bucket compact,
Multi-grip bucket,
Silage bucket,
Dung and silage gripper

Konform ist mit den einschlägigen Bestimmungen der EG-Maschinenrichtlinie (EG-Richtlinie 2006/42/EG), inclusive deren Änderungen, sowie mit dem entsprechenden Rechtserlass zur Umsetzung der Richtlinie in nationales Recht;

Is in conformity with the provisions of the Machine Directive (Directive 2006/42/EC, as amended) and with national implementing legislation;

Est conforme aux dispositions de la Directive "Machines" (Directive 2006/42/EC telle que dernièrement modifiée) et la législation nationale adoptée en application de ladite directive.

Bielefeld, Oktober 2020

Thomas Schneider,
Geschäftsführender Gesellschafter



Schneider Fahrzeug- und Containertechnik GmbH
Brockhagener Straße 92, D-33649 Bielefeld
Tel. + 49 (0)521 - 41 73 11 - 0; Fax: - 90
e-Mail: info@schneider-fc.de www.schneider-fc.de

For further questions:
Tel. +49 (0)521-41 73 12-20,
e-Mail: j.bauer@schneider-fc.de